



**POTTERIES HEAVY HAULAGE**



**INTERNATIONAL ABNORMAL LOAD SPECIALISTS**

**MOVING the FUTURE...**

# COMPANY PROFILE



Potteries Heavy Haulage Ltd is a well established family owned business with over 50 years experience in moving abnormal and out of gauge loads.

Harnessing the knowledge gained from this experience allows us to offer a comprehensive, professional and dedicated abnormal load and out of gauge transport service throughout the UK and Europe

Our base at Tunstall in the Industrial 'Potteries' region of Staffordshire -so called from the numerous ceramic and pottery industries which thrived in the Stoke on Trent area in the 19th and early 20th Centuries, gives us easy access to all areas of the UK and importantly into the heart of Europe, allowing us to fully utilise the infrastructure and road networks.



from **past...**

**...to present**





# PROJECT MANAGEMENT

Maybe you have more than one abnormal load to transport on a particular order or maybe a whole series of abnormal or out of gauge loads for a complete project to handle?

At Potteries Heavy Haulage Ltd we have an in depth knowledge moving a wide variety of abnormal loads gained from years of experience working for the petrochemical, gas and power and construction industries on an array of projects and multiple movements.

From pressure vessels and skid packages to the construction machines required to build new production plants and factories, our vehicles have carried all types of these valuable and oversized cargoes.

Our enthusiasm, hands on approach and understanding of the clients needs for each project ensures a smooth interaction for the entire duration however large or small it may be.

We are aware that every load requires a different approach and is always assessed on an individual basis to ensure the safest and most effective method is used from vendor to consignee.

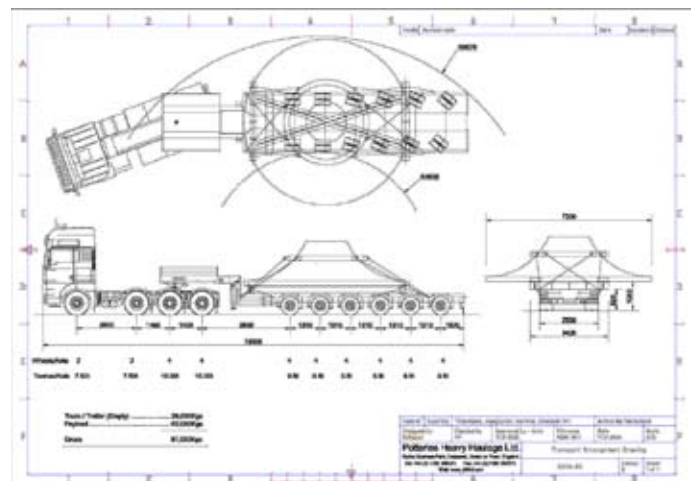
On those occasions when your oversize cargo is just too large to be transported throughout by road we are able to arrange and work in conjunction with other transport methods including inland river barges, charter vessels and even airfreight to ensure that the cargo reaches its final destination on time and within budget.

We have the resources to work 'in house' if necessary and on an impartial consultancy basis to offer professional assistance wherever and whenever required to ensure a successful partnership with our clients is maintained and develop strong working relationships for the future.

## CONSULTANCY

As part of the transport consultancy service that we offer, we can complete CAD drawings including swept path analysis data. We can carry out site surveys to produce detailed method statements and full risk assessments.

We also work with specific partners to offer turnkey solutions using water, rail and air as other sources of transport when a throughout road movement is not possible.



# FLEET DETAILS

We operate a fleet of modern vehicles and trailers, maintained to the highest standard in our own workshop by fully trained staff.

## Low Loaders

- › 2 - 6 axles
- › 0.50m - 0.60m deck heights
- › 1 - 100,000Kgs Payload
- › 7.00m - 8.50m Deck Lengths
- › Hydraulic Suspension
- › Power Steered



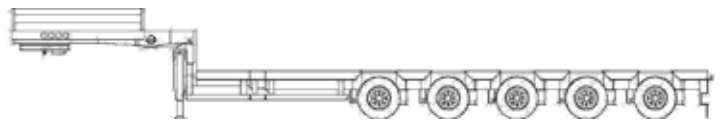
## Wafer Deck Low Loaders

- › 3 axles
- › 0.35m - 0.40m deck heights
- › 1 - 45,000Kgs Payload
- › 8.00m - 20.00m Deck Lengths
- › Hydraulic Suspension
- › Power Steered



## Semi Low Loaders

- › 3 - 5 axles
- › 0.78m - 0.95m deck heights
- › 1 - 70,000Kgs Payload
- › 9.00m - 23.00m Lower Decks
- › Hydraulic or Air Suspension
- › Power Steered



## RELATED SERVICES

As part of our extended services we are also able to offer and provide the following related transport services.

### PRIVATE ESCORTING OF ABNORMAL LOADS

Since regulations were amended in the UK in 2005, we are now permitted to use our own private escort vehicles to accompany abnormal loads in England in lieu of the police or when it is deemed in the interest of road safety, a marked escort vehicle provides a suitable advanced warning of the presence of an abnormal load to other road users.

One of our escort vehicles is fully compliant and registered under the stringent BF3 regulations for use as an official escort vehicle in Germany.

### MOVEMENT PERMITS, VR1, AND SPECIAL ORDER APPLICATIONS

We apply for our own UK movement authorisations for both C&U and STGO category 1, 2 and 3 movements. We also liaise with the Highways Agency and seek initial agreement in principals as well as apply for VR1 and Special Order movement authorisations.

For abnormal load movements in Europe we have a close network of authorised agents who obtain the permits on our behalf. These agents also arrange pilot cars and police escorts when our vehicles are travelling throughout Europe.

### ROUTE SURVEYS & FEASIBILITY STUDIES

As part of the total transport service we can complete detailed feasibility studies prior to fabrication of specific loads. We can assess everything from loading at the vendors premises through to nomination of specific trailers required and upto the final offloading point. As part of the detailed final report we will evaluate all methods of transport including road, water and air to determine the most cost effective and practical solutions to a given load, to ensure the clients requirements are met in full.

We have our own in house Autocad drawing system whereby we can create detailed load drawings and swept path analysis of the loaded vehicles in any given situation. This is backed up with site visits to verify our findings.





# MISSION STATEMENT

"To work together with our clients to achieve consistently high standards of professional abnormal load transport."

We are committed to strengthen and improve our services through continued investment in our people and embracing the latest vehicle technologies and designs"



# HEALTH&SAFETY POLICY



It is the policy of Potteries Heavy Haulage Ltd to ensure that all reasonably practicable steps will be taken to ensure the health, safety and welfare of its employees and the protection of others not in its employ, who have legitimate reasons for being on or about company premises. The Company recognises its statutory obligations to maintain standards of safety for all its employees in every aspect of their work in relation to equipment and workplaces, and for continually maintaining its initiative to ensure that these obligations are fulfilled. It is considered essential in the interest of all employees, that they should observe and maintain the safety standards as laid down in this Policy.

The Company also recognises its obligation to members of the public, contractors and visitors and will ensure that measures, where necessary, will be taken to maintain their health & safety. Management and staff will be required to co-operate to maintain the health & safety at work of the workforce by observation of agreed practices and procedures for improved standards of protection for all persons using the company's premises. Health & Safety must be regarded as a mutual objective for management and employees at all levels. Therefore management will:

- › Provide and maintain safe and healthy working conditions in accordance with the Health & Safety at Work etc. Act 1974 and all subsequent and relevant statutory requirements.
- › Carry out suitable risk assessments of all and tasks carried out (to include the risks from noise, manual handling and exposure to chemicals & substances etc).
- › Provide and maintain safe means of access and egress from all premises and locations.
- › Provide safety training, information and instruction as required for all employees, visitors and contractors etc, as appropriate.
- › Provide all necessary safety devices, protective equipment and supervise their use.
- › Maintain a constant and continuing interest in all aspects of safety, in particular by introducing and monitoring safety procedures, and involving employees or their representatives wherever possible.

All staff have a duty to co-operate fully in the operation of this Policy by:

- › Working safely and efficiently, complying with any instruction, information & training in accordance with all company procedures and statutory obligations.
- › Immediately reporting incidents (including accidents, near misses, which have resulted in, or may lead to injury).
- › Assisting with the investigation of accidents and aiding the introduction of measures to prevent a recurrence.

The Policy has the full support and total commitment of the Board of Directors, and will be regularly monitored to ensure that the objectives are achieved. It will be reviewed and, if necessary, revised in the light of legislative or organisational changes.

**Michael Edwards**  
Managing Director

**Jonathon Edwards**  
Company Secretary

# TEAM STRUCTURE



Our enthusiastic and knowledgeable staff are always on hand to answer any questions you may have and we pride ourselves in being able to respond quickly and efficiently with your enquiries.

## Our Management Team

**Michael Edwards**  
Managing Director

**Jonathon Edwards**  
Director

**Robert Powell**  
Operations Manager

**Nicola Thomas**  
Accounts

## Contact Details

Potteries Heavy Haulage Ltd  
High Street  
Tunstall  
Stoke-on-Trent  
Staffordshire  
ST6 5ET  
England

**Tel:** +44 (0)1782 827 373  
**Fax:** +44 (0)1782 827 273  
**Email:** [info@phhltd.com](mailto:info@phhltd.com)  
**Web:** [www.phhltd.com](http://www.phhltd.com)

Potteries Heavy Haulage Ltd are members of the following associations:



**Road Haulage Association (RHA)**  
[www.rha.uk.net](http://www.rha.uk.net)



**Freight Transport Association (FTA)**  
[www.fta.co.uk](http://www.fta.co.uk)







**POTTERIES HEAVY HAULAGE**



Potteries Heavy Haulage Ltd  
High Street  
Tunstall  
Stoke-on-Trent  
Staffordshire  
ST6 5ET  
England

**Tel:** +44 (0)1782 827 373  
**Fax:** +44 (0)1782 827 273  
**Email:** [info@phhltd.com](mailto:info@phhltd.com)  
**Web:** [www.phhltd.com](http://www.phhltd.com)